

Product availability: Non-Stock - Not normally stocked in distribution facility

Price\*: 109.68 USD



### Main

Range of Product	Modicon M171
Product or Component Type	Controller

### Complementary

Number of port	1 Modbus serial link - RS485
Input/output number	8 total) 4 analog input 2 digital input 2 digital output
Discrete input number	2
Discrete input logic	Sink or source (positive/negative)
Contacts usage	Volt-free contacts
Sensor power supply	5 V DC 12 V DC
Discrete output number	1 open collector 1 SPST
Analogue input number	2 analog input NTC 2 analog input Pt 1000 4...20 mA or 0...5 V or 0...10 V
[Us] rated supply voltage	24 V +/- 10 % AC/DC
Display Type	Without Display
Mounting Support	DIN rail
Maximum Width	2.76 In (70.2 mm)
Maximum Height	3.43 In (87 mm)
Maximum Depth	2.43 In (61.6 mm)

### Environment

Marking	CE
Ambient air temperature for operation	23...122 °F (-5...50 °C)
IP degree of protection	IP20

## Ordering and shipping details

Category	22537 - M171 / M172 HVAC CONTROLLERS
Discount Schedule	PC12
GTIN	03606480752902
Nbr. of units in pkg.	1
Package weight(Lbs)	9.70 Oz (275 g)
Returnability	Yes
Country of origin	IT

## Packing Units

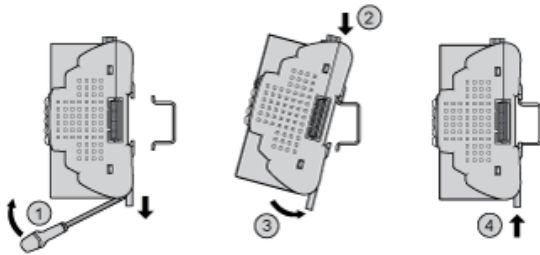
Unit Type of Package 1	PCE
Package 1 Height	5.31 In (13.5 cm)
Package 1 width	3.58 In (9.1 cm)
Package 1 Length	7.28 In (18.5 cm)

## Offer Sustainability

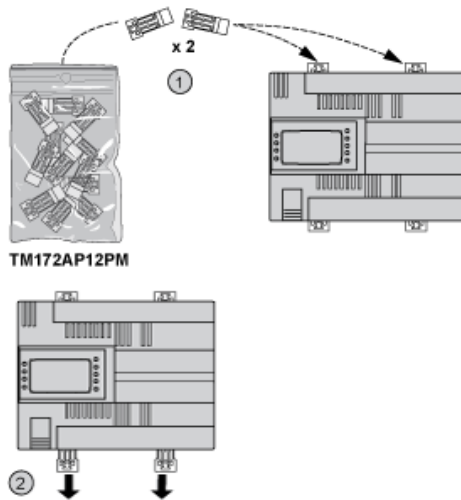
Sustainable offer status	Green Premium product
California proposition 65	WARNING: This product can expose you to chemicals including: Lead and lead compounds, which is known to the State of California to cause cancer and birth defects or other reproductive harm. For more information go to <a href="http://www.P65Warnings.ca.gov">www.P65Warnings.ca.gov</a>
REACH Regulation	<a href="#">REACH Declaration</a>
REACH free of SVHC	Yes
EU RoHS Directive	Pro-active compliance (Product out of EU RoHS legal scope) <a href="#">EU RoHS Declaration</a>
Mercury free	Yes
RoHS exemption information	<a href="#">Yes</a>
China RoHS Regulation	<a href="#">China RoHS Declaration</a>
Environmental Disclosure	<a href="#">Product Environmental Profile</a>
Circularity Profile	<a href="#">End Of Life Information</a>
WEEE	The product must be disposed on European Union markets following specific waste collection and never end up in rubbish bins.

Mounting and Clearance

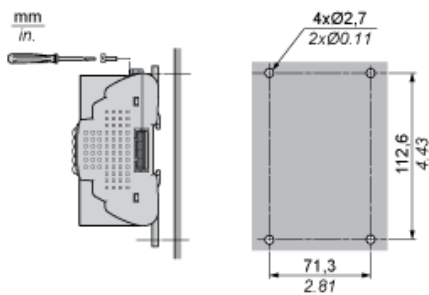
DIN Rail Mounting



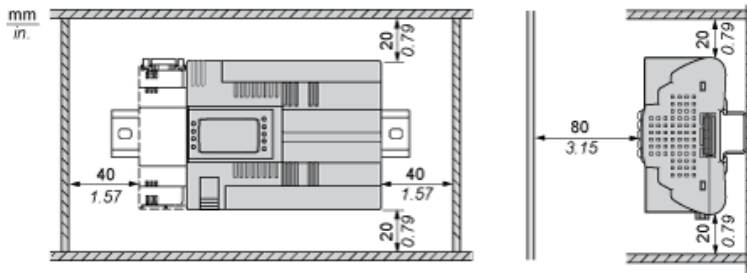
Clips for Panel Mounting



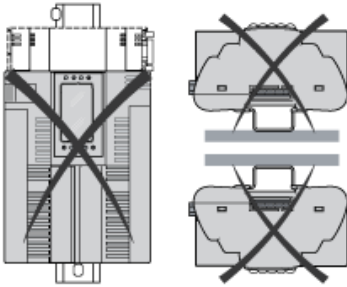
Panel Mounting



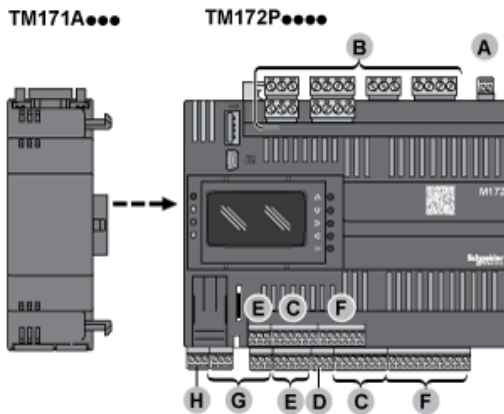
## Clearance



## Incorrect Mounting Position



## Assembling a Module



## Wiring Sections and Torque

A, C, D, E, F, G, H

$\frac{9}{0.35}$								
mm <sup>2</sup>	0.14...1.5	0.14...1.5	0.25...1.5	0.25...0.5	2 x 0.08...0.5	2 x 0.08...0.75	2 x 0.25...0.34	2 x 0.5
AWG	26...16	26...16	22...16	22...20	2 x 28...20	2 x 28...20	2 x 24...22	2 x 20

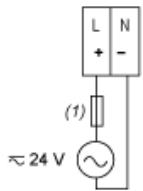
		N·m	0.22...0.25
Ø 2.5 mm (0.1 in.)	C	lb·in	1.95...2.21

B

$\frac{7}{0.28}$								
mm <sup>2</sup>	0.2...2.5	0.2...2.5	0.25...2.5	0.25...2.5	2 x 0.2...1	2 x 0.2...1.5	2 x 0.25...1	2 x 0.5...1.5
AWG	24...14	24...14	22...14	22...14	2 x 24...18	2 x 24...16	2 x 22...18	2 x 20...16

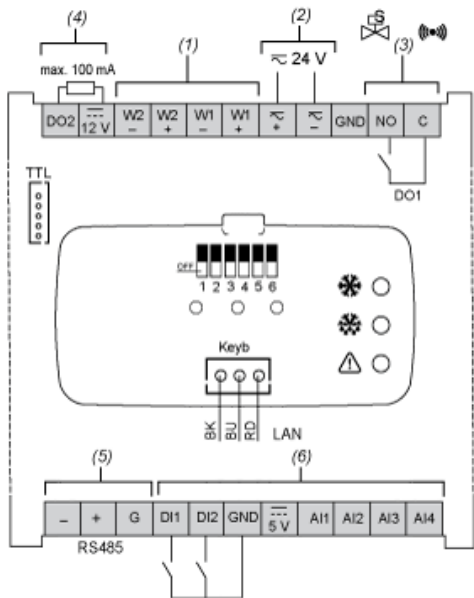
		N·m	0.5...0.6
Ø 3.5 mm (0.14 in.)	C	lb·in	4.42...5.31

Power Supply



(1) Type T fuse 3,15 A

Wiring Diagram



- (1) Electronic Expansion Valve output
- (2) Power supply 24 V ac/dc
- (3) DO1: Relay output 5 A 250 Vac (Solenoid valve/Alarm)  
C: Common - NO: Normally Open
- (4) DO2: Open collector (Solenoid valve/Alarm)
- (5) Serial port RS485
- (6) Digital and analog inputs  
GND - Ground

Product Life Status : **Commercialised**